



MONTHLY MEMBERSHIP PROGRESS REPORT

District 3234H2

Results as of: 06/30/2018

GMT: JAYESH THAKKAR

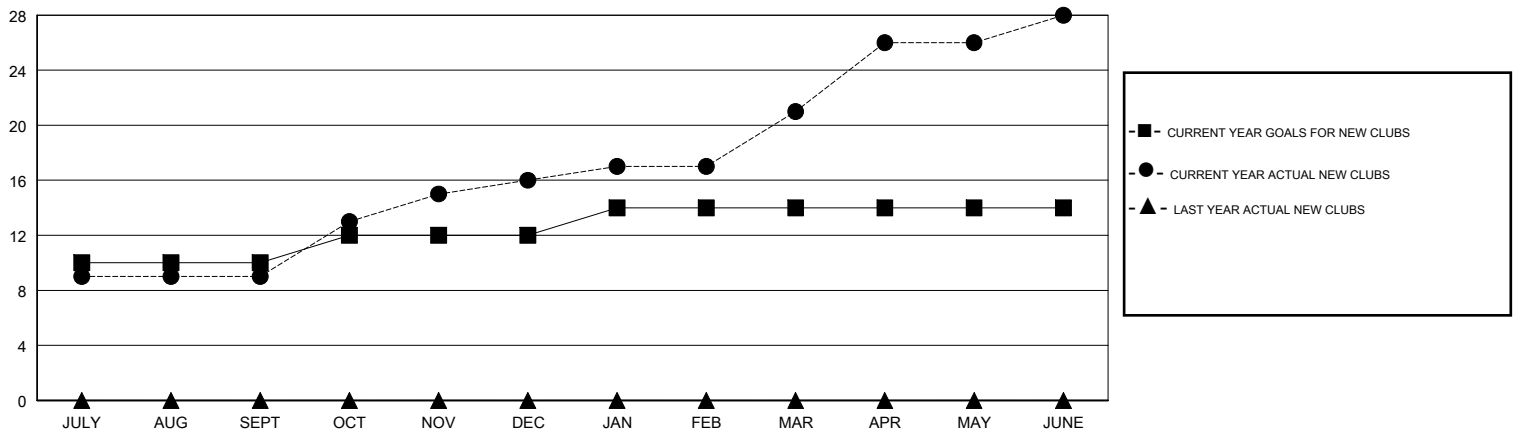
LOCATION INDIA

GMT CA

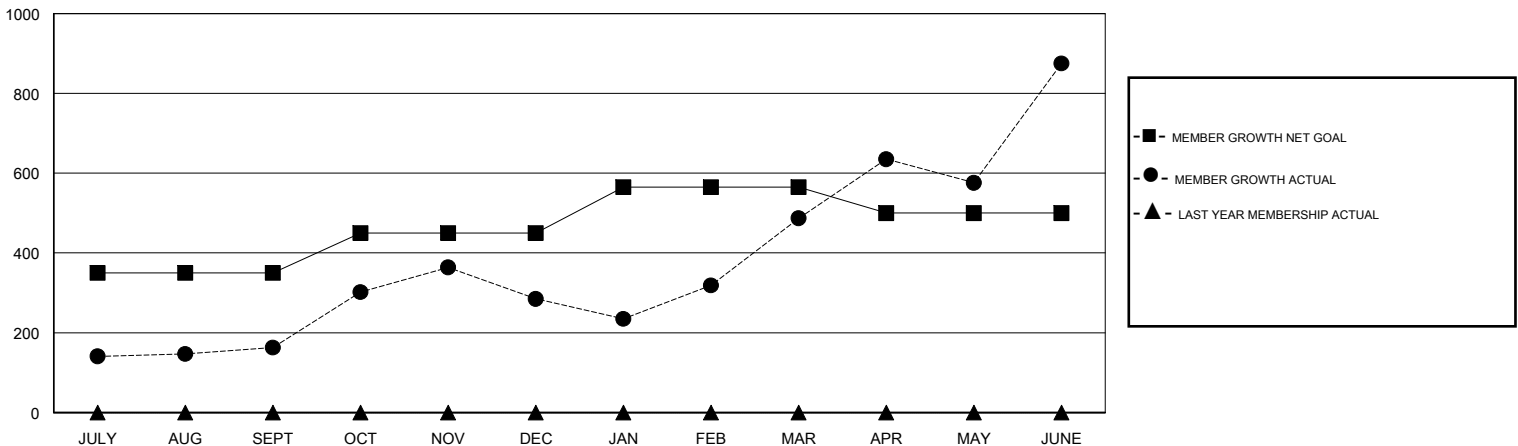
Clubs			
RESULTS FOR 2017-2018			
QUARTER	NEW CLUB GOAL	NEW CLUBS	DROPPED CLUBS
JULY/AUG/SEPT	10	9	0
OCT/NOV/DEC	2	7	4
JAN/FEB/MAR	2	5	1
APR/MAY/JUNE	0	7	6

Members			
RESULTS FOR 2017-2018			
QUARTER	MEMBER GROWTH NET GOAL	MEMBER GROWTH ACTUAL	DROPPED MEMBERS ACTUAL (including transfers)
JULY/AUG/SEPT	350	330	139
OCT/NOV/DEC	100	269	146
JAN/FEB/MAR	115	418	98
APR/MAY/JUNE	-65	954	509

GOALS AND ACTUAL NEW CLUBS CUMULATIVE



GOALS AND ACTUAL MEMBERS CUMULATIVE



DROPPED CLUBS: 11

86 CLUBS OF 98 ADDED 1 OR MORE NEW MEMBERS

GENDER DISTRIBUTION

MALE 3,125 (74.28%)
 FEMALE 1,082 (25.72%)
 Women Percentage Fiscal Year Goal: 20%

DROPPED MEMBERS

[CLICK HERE FOR CUMULATIVE MEMBERSHIP DATA](#)

DECEASED	7
CLUB CANCELLED	268
OTHER	617
TOTAL	892

TOTAL FAMILY UNIT MEMBERS	0
FAMILY MEMBERS PAYING HALF DUES	0